

Rogue Wave Software, a Perforce® company

Visualization for C++ product family

Version 7.1

Quick Start Guide

This guide gets you started with a typical installation for Visualization for C++ products.

Product Overview

The Visualization for C++ product family is a cross-platform set of C++ libraries that brings the power of 2D graphics and the convenience of GUI builders into one array of easy-to-learn products. It handles a wide range of graphic tasks, from simple form-based graphical user interfaces to complex real-time vector graphics applications managing hundreds of thousands of objects simultaneously. It also includes a layer virtualizing the connection to databases and an environment to develop distributed applications for monitoring and supervision systems. Some examples of use cases are cartographic applications, specialized editors, control and process applications, network monitoring applications, financial applications, and transportation applications.

NOTE: Certain components and optional products associated with Visualization for C++ are sold and licensed separately. Specifically, the Views Charts, Graph Layout, Maps, and Data Access are optional components and are not included as part of a basic Views license. Likewise, DB Link and Server are additional products with separate pricing and licensing requirements.

This Quick Start Guide explains how to install all components and products, regardless of what components or products you are legally licensed to use.

Product Installation

Step 1: Access your software and documentation

You will have received an email from that contains account details to accomplish the FTP download for your software. Log into the FTP site, accept the License Agreement, and then download the file(s).

This product offering includes:

- A download file that contains the Quick Start Guide (this document) and all the required files to install the licensed component(s) or product(s) on Linux/UNIX and Microsoft Windows systems
- Installation instructions are given in the installer Setup program

The complete product documentation is installed as part of the Visualization for C++ product family installation.

Step 2: Confirm your hardware and system configuration

To confirm the supported system requirements, go to <https://help.perforce.com/visualization/> and select System Requirements.

Step 3: Install Visualization for C++

Views and its optional components, Charts, Maps, Data Access, and Graph Layout, the Visualization Server, and DB Link, can be installed using a console or graphical installer. To install each of these products requires the license key you received upon purchase. The following instructions describe the installation steps and how to enter the license keys.

1. Extract the archive file for your product into a temporary location.

On Microsoft Windows systems:

Views-7.1-windows-installer.exe (Views 32-bit)
ViewsDebug-7.1-windows-installer.exe (Views 32-bit – Debug Symbols)
Views-7.1-windows-x64-installer.exe (Views 64-bit)
ViewsDebug-7.1-windows-x64-installer.exe (Views 64-bit – Debug Symbols)
Server-7.1-windows-installer.exe (Server)
ServerDebug-7.1-windows-installer.exe (Server – Debug Symbols)
DBLink-7.1-windows-installer.exe (DB Link)
DBLinkDebug-7.1-windows-installer.exe (DB Link – Debug Symbols)

** Platform available upon request*

On UNIX/Linux systems, depending on your platforms, the installers are grouped by platform class:

Views-7.1-linux-installer.run (Views for Linux 32-bit platforms)
ViewsDebug-7.1-linux-installer.run (Views for Linux 32-bit platforms – Debug Symbols)
Views-7.1-linux-x64-installer.run (Views for Linux 64-bit platforms)
ViewsDebug-7.1-linux-x64-installer.run (Views for Linux 64-bit platforms – Debug Symbols)
Views-7.1-solaris-installer.run (Views for Solaris platforms)
ViewsDebug-7.1-solaris-installer.run (Views for Solaris platforms – Debug Symbols)
Views-7.1-aix-installer.run (Views for AIX platforms)*
Views-7.1-hpux-installer.run (Views for HPUX platforms)*
ViewsBidi-7.1-windows-installer.exe (Views Bidi 32-bit)*
ViewsBidi-7.1-windows-x64-installer.exe (Views Bidi 64-bit)*
Server-7.1-linux-x64-installer.run (Server for Linux 64-bit platforms)
ServerDebug-7.1-linux-x64-installer.run (Server for Linux 64-bit platforms – Debug Symbols)
Server-7.1-solaris-installer.run (Server for Solaris platforms)
ServerDebug-7.1-solaris-installer.run (Server for Solaris platforms – Debug Symbols)
Server-7.1-aix-installer.run (Server for AIX platforms)*
Server-7.1-hpux-installer.run (Server for HPUX platforms)*

** Platform available upon request*

2. Install Views with Graphical Installer

On Microsoft Windows systems

From the temporary location, run or double click on the .exe file to launch the installer for your licensed product.

By default, the products are installed into the “C:\Perforce” directory.

On Linux/UNIX systems.

From the temporary location, follow the steps below to run the installation script for your product.

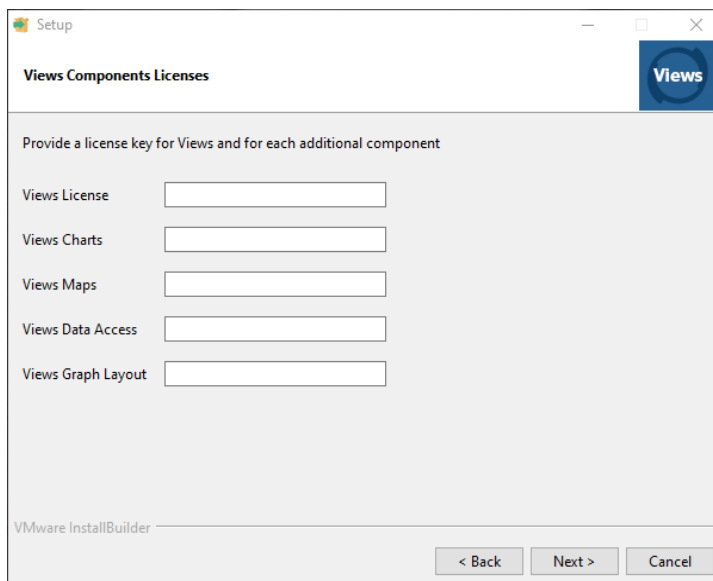
For Views, Server, or DB Link, change your directory to the temporary location, and then execute the installation script. For example, to install on a Linux system:

```
sh Views-7.1-linux-x64-installer.run
```

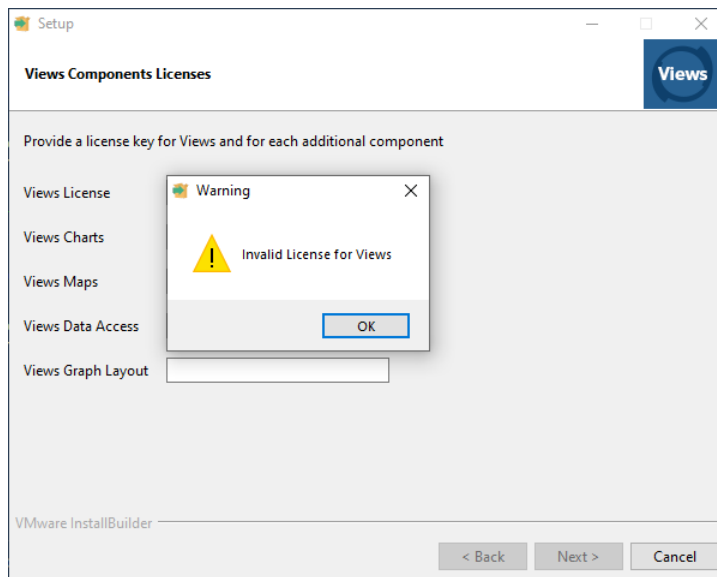
By default, the products are installed into the “~/Perforce” directory.

Graphical Installer Steps

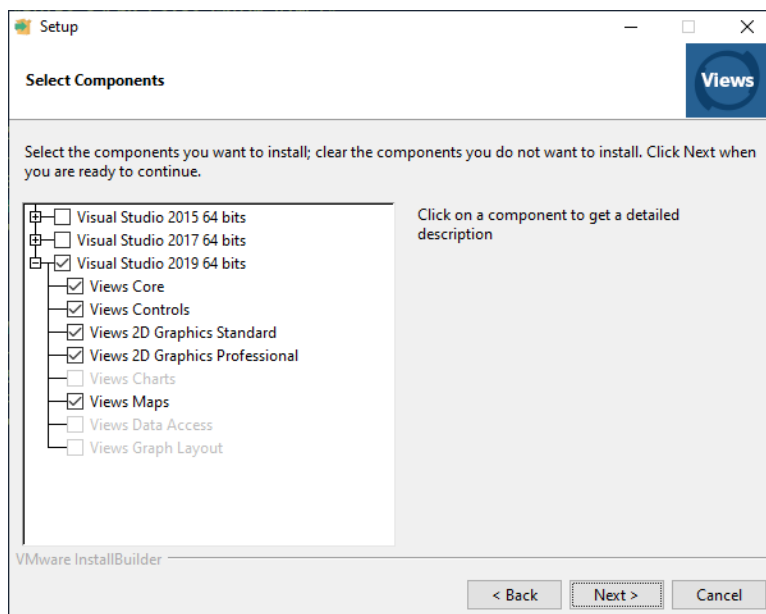
Both Windows and Linux/UNIX installation follow a similar set of steps. After specifying the installation location on the installation directory page, enter the license keys for each of the five Views products you purchased and received keys for.

The image shows a screenshot of a graphical installer window titled "Setup". The window has a standard Windows-style title bar with minimize, maximize, and close buttons. Below the title bar, the text "Views Components Licenses" is displayed. In the top right corner, there is a blue square button with the word "Views" in white. The main area of the window contains the instruction "Provide a license key for Views and for each additional component". Below this instruction, there are five rows, each with a label and a text input field: "Views License", "Views Charts", "Views Maps", "Views Data Access", and "Views Graph Layout". At the bottom of the window, there is a status bar that says "VMware InstallBuilder". To the right of the status bar are three buttons: "< Back", "Next >", and "Cancel".

A valid license key for Views is mandatory to install the base Views product, which is the minimum installation possible.



After entering the license key for each of the products you purchased, you can select which components to install. Only the components you have entered valid license keys for are selectable.



After selecting the components you wish to install, follow the prompts to complete the installation.

3. Install Views with Console Installer Steps

Providing license keys through the console-based installer mirrors the way this is done through the UI based installer. The installer accepts five options which correspond to the five license fields shown in the graphical installer.

```
--views-key  
--charts-key  
--maps-key  
--data-access-key  
--graph-layout-key
```

The first option, `--views-key`, is mandatory and must be followed by the license key for the base product. For the remaining four options, provide the license keys for the optional products you have purchased. If you omit the license key for an optional product, that product will not be installed. For example, to install the base product, Views, and an optional product, Maps, use the following command:

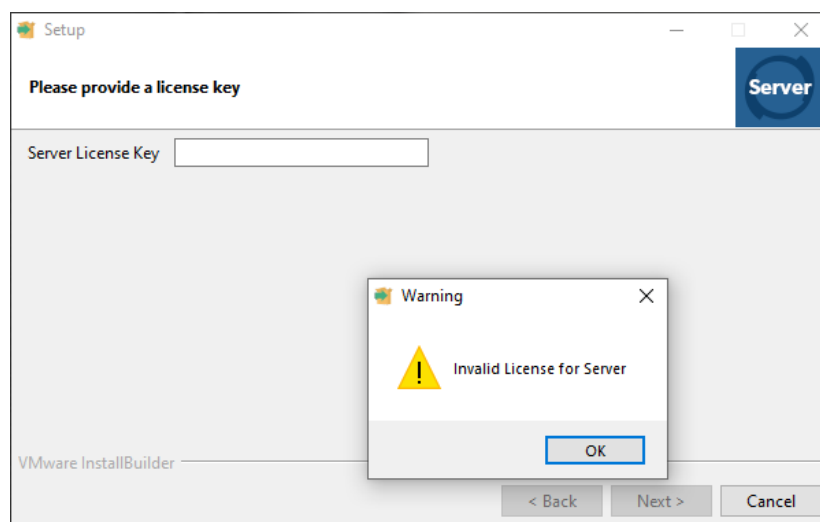
```
.\Views-7.1-windows-x64-installer.exe --mode unattended --enable-components visual_studio_2019_64_bits --views-key <VALID VIEWS KEY> --maps-key <VALID MAPS KEY>
```

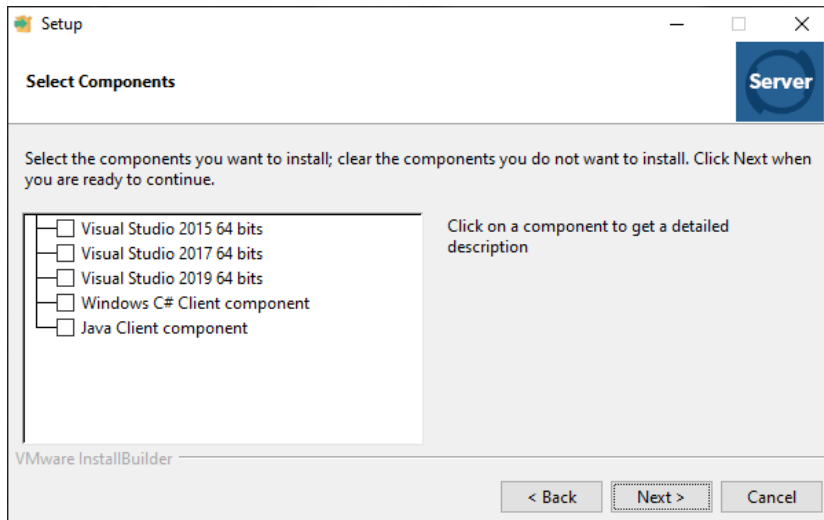
Installing Visualization Server with the Graphical and Console Installer

Installing the Visualization Server follows the same process and requires a license key.

Visualization Server Graphical Installer Steps

When prompted, enter the Server license key you received upon purchase. After entering a valid license, you can select which components to install.





Visualization Server Console Installer Steps

Providing a license key through the console-based installation mirrors the way this is done through the UI based installation. To install Server from the command line, add the `--license-key` option followed by the key. For example, to install Server from the command line, you would use something similar to the following:

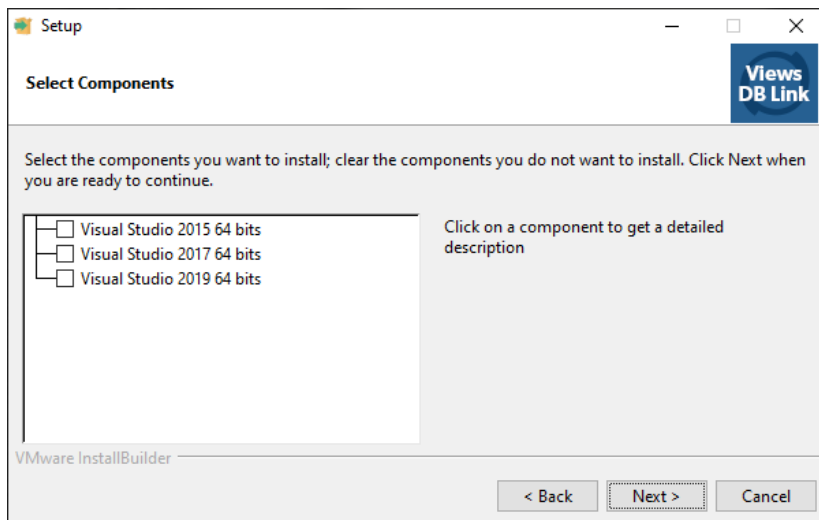
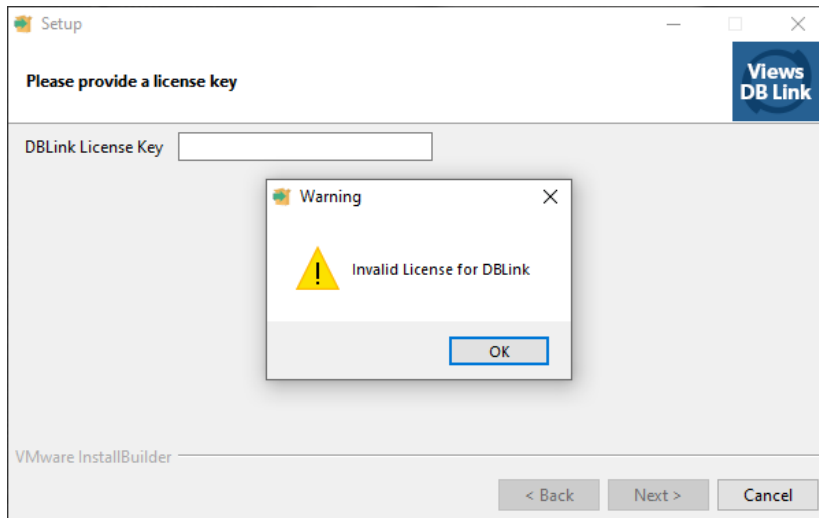
```
./Server-7.1-windows-x64-installer.run --mode unattended --license-key <VALID SERVER KEY> --enable-components visual_studio_2019_64_bits,java_client_component
```

4. Installing Views DB Link with the Graphical and Console Installer

Installing the Views DB Link follows the same process and requires a license key.

Views DB Link Graphical Installer Steps

When prompted, enter the DB Link license key you received upon purchase. After entering a valid license, you can select which components to install.



Views DB Link Console Installer Steps

Providing a license key through the console-based installer mirrors the way this is done through the UI based installation. To install DB Link from the command line, add the '--license-key' option followed by the key. For example, to install DB Link from the

command line, you would use something like the following:

```
./DBLink-7.1-windows-x64-installer.run --mode unattended --license-key <VALID DBLINK KEY> --enable-components visual_studio_2019_64_bits
```

Building Product Samples

Starting with Views 7.1 Views samples are built with using [cmake](https://cmake.org) (<https://cmake.org>) rather than the previous “makemake” approach. Cmake provides a convenient cross-platform build platform for compiling and linking Views applications. The following are examples of using cmake to build the samples on Windows and Linux:

On Windows, running the following command from within your build directory generates an MS Visual Studio solution:

```
cd <Views samples>
cmake %ILVHOME%/samples -G "Visual Studio 16 2019"
    -DCMAKE_GENERATOR_PLATFORM=x64
    -DVISU_SYSTEM_NAME="x64_.net2019_16.0"
    -DVISU_LINK_MODE=dll_mda
```

The samples can now be built from within Visual Studio.

On Linux/Unix, running the following command from within your build directory generates a makefile project:

```
cd <Views samples>
cmake $ILVHOME/samples -G "Unix Makefiles" \
    -DVISU_SYSTEM_NAME="x64_rhel7.2_5.3" \
    -DVISU_LINK_MODE=shared \
    -DCMAKE_BUILD_TYPE=Release
```

The samples can now be built using the make command.

For more details on using cmake in Views see the *Compiling and linking* section in the Views documentation under About | Product Overview | Welcome to the Views Component Suite | Compilation.

More information

For more information, see the following resources.

- Views Visualization for C++ product pages:
<https://www.perforce.com/products/visualization/views>
- To contact Software Support:
<https://www.perforce.com/support/request-support>

PERFORCE

Rogue Wave Software, a Perforce company, provides software development tools for mission-critical applications. Our trusted solutions address the growing complexity of building great software and accelerates the value gained from code across the enterprise. Rogue Wave's portfolio of complementary, cross-platform tools helps developers quickly build applications for strategic software initiatives. With Rogue Wave, customers improve software quality and ensure code integrity, while shortening development cycle times.

© Rogue Wave Software, Inc., a Perforce company. All Rights Reserved